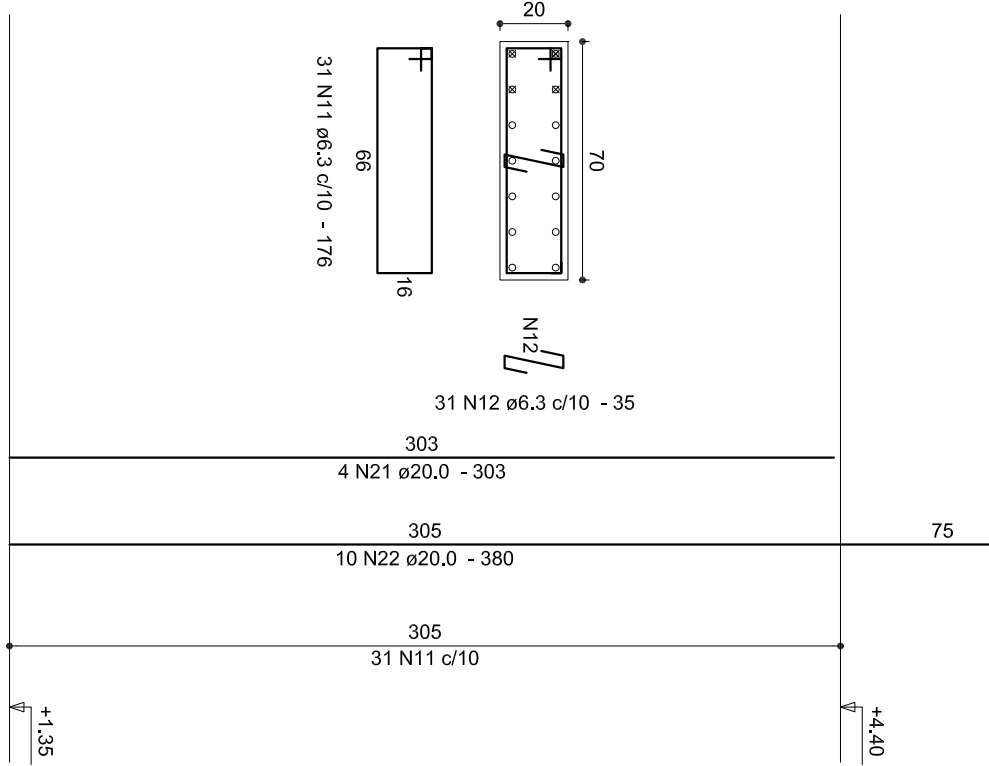
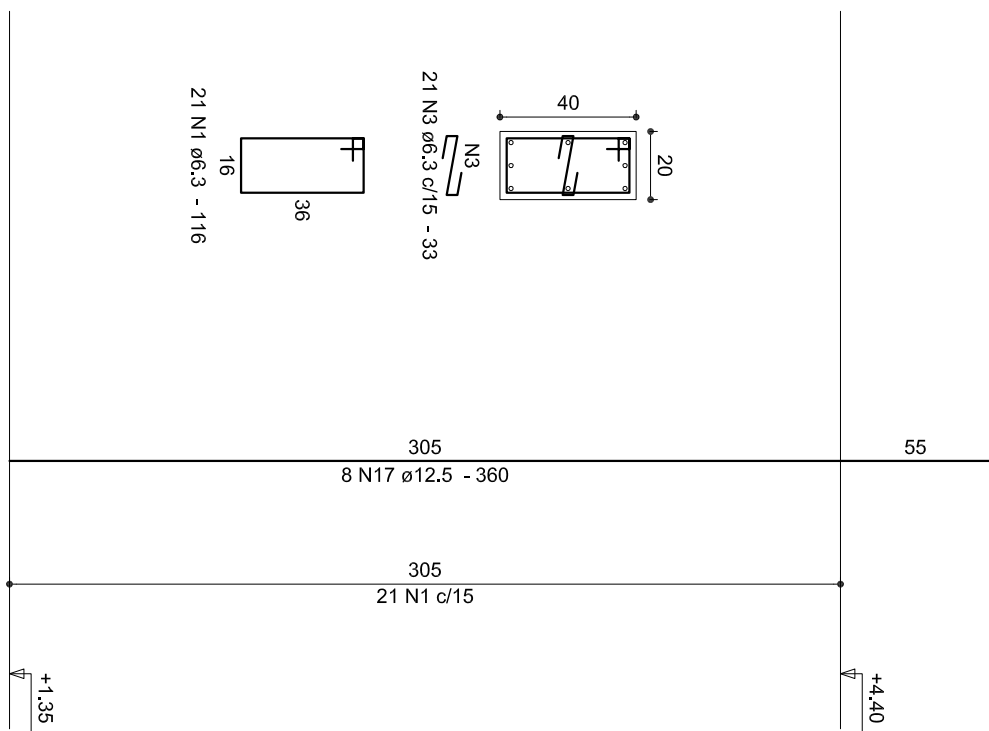
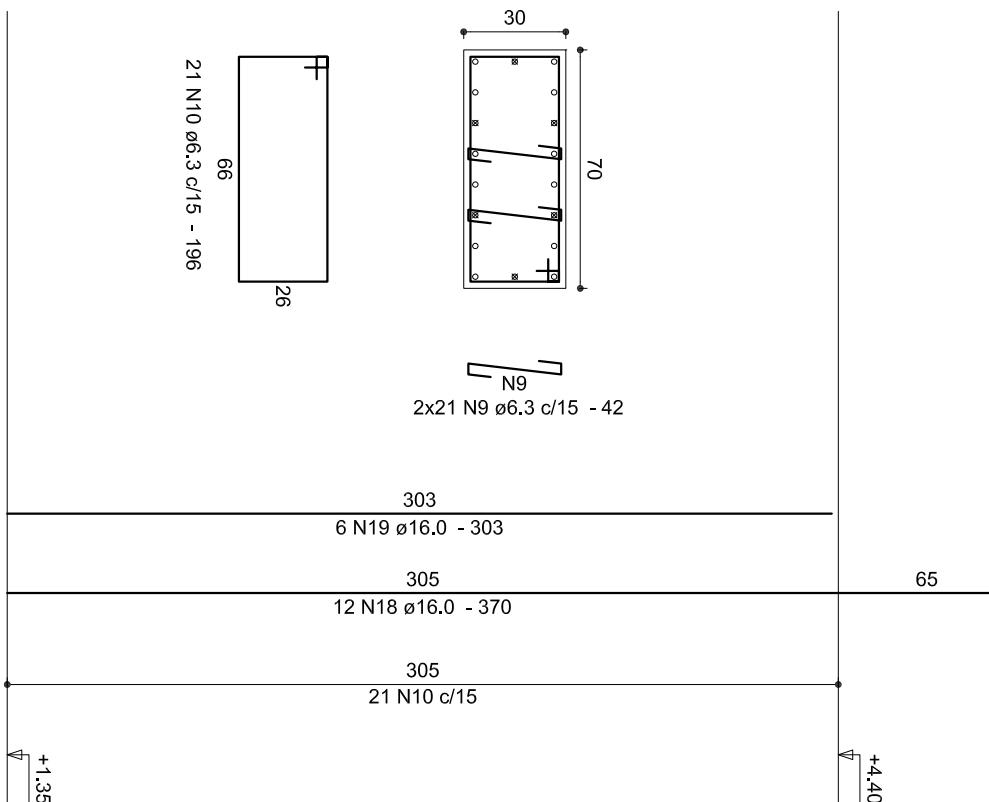
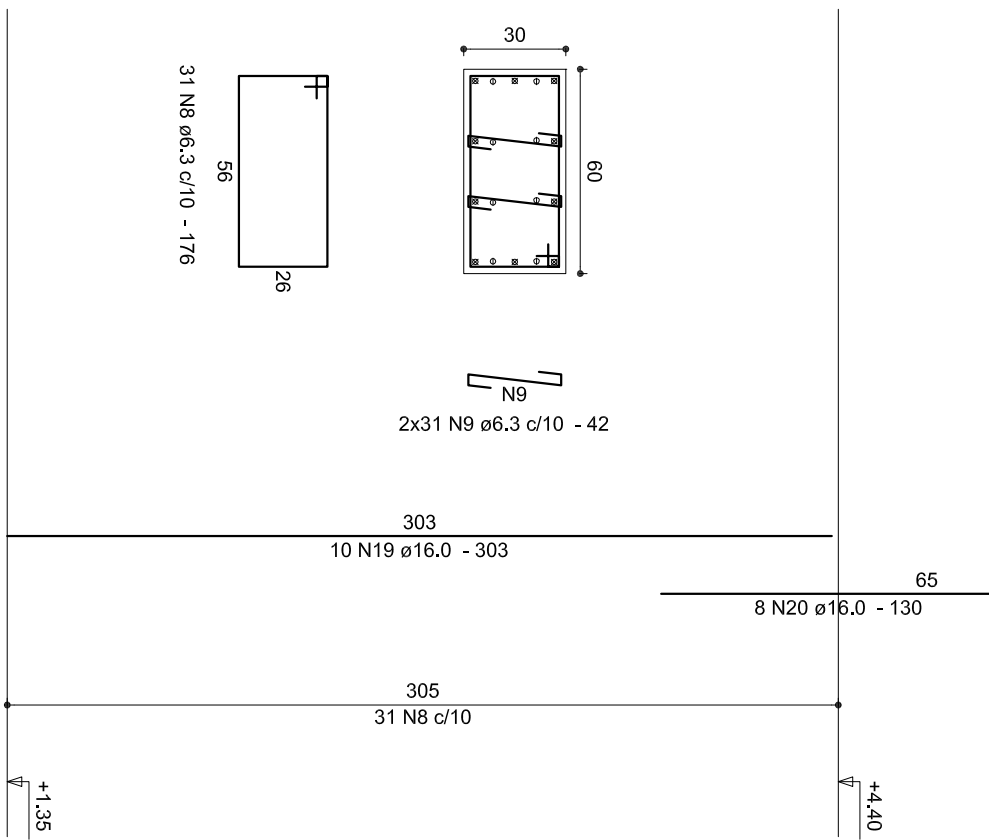
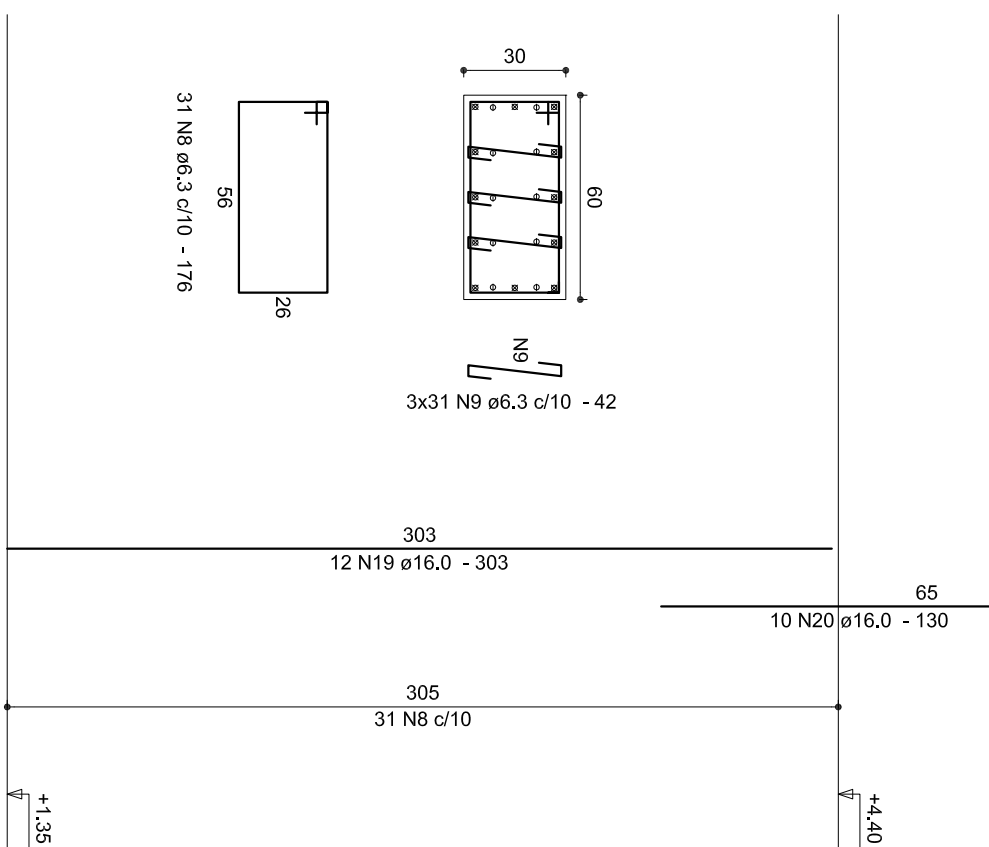
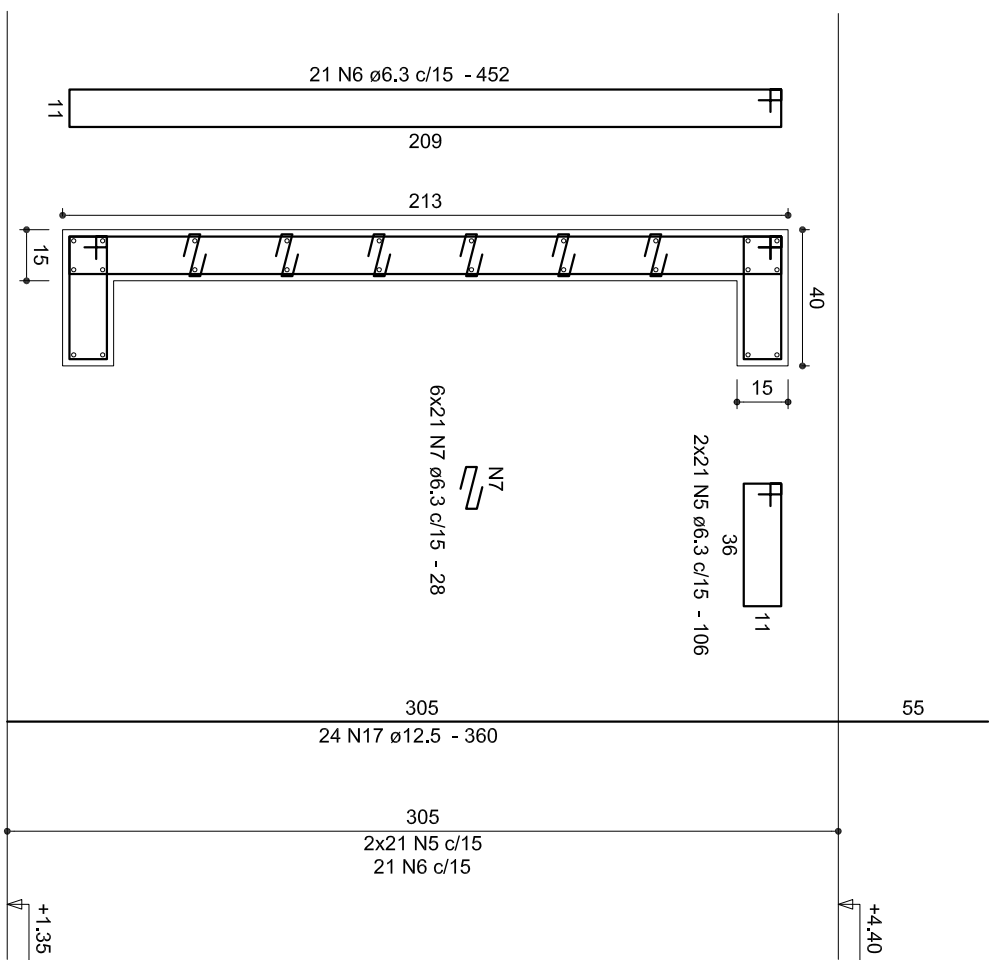



AOO	N	DIAM	Q	UNIT	C-TOTAL
CA60	1	6.3	176	136	1616
	2	6.3	102	33	9302
	3	6.3	282	138	1616
	4	6.3	18	33	9302
	5	6.3	18	33	9302
	6	6.3	42	452	18884
	7	6.3	282	28	7056
	8	6.3	62	176	10032
	9	6.3	176	10032	176
	10	6.3	416	21	186
	11	6.3	31	176	5456
	12	6.3	31	30	7056
	13	6.3	30	30	7056
	14	6.3	30	30	7056
	15	10.0	26	380	9264
	16	10.0	4	380	2624
	17	12.5	6	380	5824
	18	12.5	6	380	5824
	19	18.0	22	370	8640
	20	18.0	22	370	8640
	21	18.0	18	300	3240
	22	20.0	10	380	2240

AÇO	DIAM	C.TOTAL	PESO
		(m)	(kg)
CA50	6.3	1089.8	286.7
	10.0	122.3	75.4
	12.5	312.3	300.8
	16.0	189.7	299.3
PESO TOTAL	20.0	50.2	123.6
CA50	1065.7	Vol. de concreto = 7.60 m³ Área de forma = 100.35 m²	



REVISÃO	DATA	MODIFICAÇÕES	RESP.



**ENGEOP**

ENGENHARIA E GESTÃO DE OBRAS E PROJETOS

[illegible]